

primus®

GET AHEAD IN LAUNDRY



## TX12 | TX14 | TX18 TUMBLE DRYER



**LOWER ENERGY CONSUMPTION**  
To save your bottom line



**SHORTER DRYING CYCLES**  
For even more productive laundry operations



**ERGONOMIC IMPROVEMENTS**  
For easier operation



**MOISTURE SENSING**  
Innovative electro conductivity technology ensures higher accuracy and prevents overdrying



**FLEXIBLE DOOR OPENING**  
Reversible door design and new magnetick locking system



**CONNECTIVITY**  
Integrated WiFi module as standard

### FEATURES & BENEFITS

#### Features

- Frequency controlled motor
- Lint filter drawer for an user friendly maintenance
- Large door opening for easy loading and unloading
- Reversing drum as standard
- Standard galvanized drum with large diameter
- WiFi module as standard

#### Options

- Coin operated version (VEND)
- Stainless steel front panel
- Stainless steel drum
- Double door glass
- Residual moisture control:
  - electro conductivity of linen measured with ribs
  - safe drying of delicate linen and overdrying prevention

#### Control

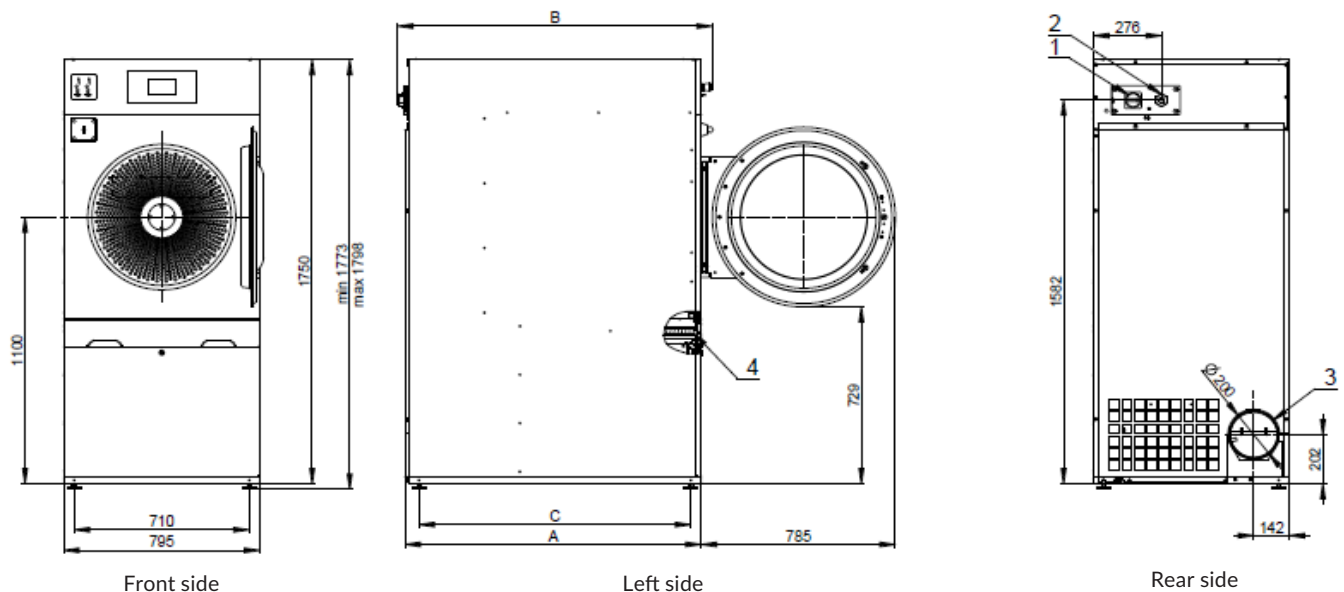
- 3 tiers of controls available
  - Xtronic - micro processor for VEND and OPL with 4 temperature levels
  - Xtronic - advanced microprocessor for OPL only with 9 editable programs
  - Xcontrol FlexPlus - 5" multilingual touch screen
- WiFi as standard execution for all
- Cloud connectivity for 24/7 machine monitoring possible
- USB port for easy firmware updates, configuration and program uploads (Touch control)

## SPECIFICATIONS

TYPE		TX12	TX14	TX18
CAPACITY				
Capacity 1:18	kg (lb)	14	16	20
Capacity 1:22	kg (lb)	11	13	16,5
Drum volume	l	250	285	360
Drum diameter	mm	760	760	760
AIRFLOW	m³/h	700	700	900
DRYING AVERAGE	g/min.	210	210	270
MOTORS				
Fan	kW	0,37	0,37	0,37
Drive	kW	0,37	0,37	0,37
ELECTRICAL HEATING				
Energy	kW	13,5	13,5	18
El. connection		208-240V 50/60Hz 1Ph - optional for gas and steam 208-240V 50/60Hz 3Ph - optional 380-415V +N 50/60Hz 3Ph - standard 380-415V 50/60Hz 3Ph - optional 440-480V 50/60Hz 3Ph - optional		
GAS HEATING				
Gas connection	inch	½"	½"	½"
STEAM HEATING				
Steam connection		-	-	¾"
Exhaust	mm	Ø 200	Ø 200	Ø 200
DIMENSIONS				
H×W×D	mm	1750x795x1040	1750x795x1115	1750x795x1280
Net weight	kg	175	180	195
TRANSPORT DATA				
Packed H×W×D	mm	1880x855x1100	1880x855x1180	1880x855x1340
Gross weight	kg	195	200	215

## DIMENSIONS

	A	B	C
TX12	958	1036	861
TX14	1036	1114	939
TX18	1200	1277	1103



1. Main Switch
2. Main power supply
3. Exhaust
4. Filter